



# Customer Services Property Report

**THIS IS NOT A LIM REPORT**

Report Generated: 17/06/2025 9:30:12 am

Valuation Address	153 Wheatstone Road Wainui
Assessment Number	0823047713
Legal Description	LOT 31 DP 443911
Title	555888
Capital Value	\$ 1370000
Land Value	\$ 580000
Annual Rates	\$ 4526.44
Area (ha)	4.006
Rubbish Day	MONDAY
District Plan Zone	General Residential Rural Residential
Building Consents	18020-New Building
Resource Consents	

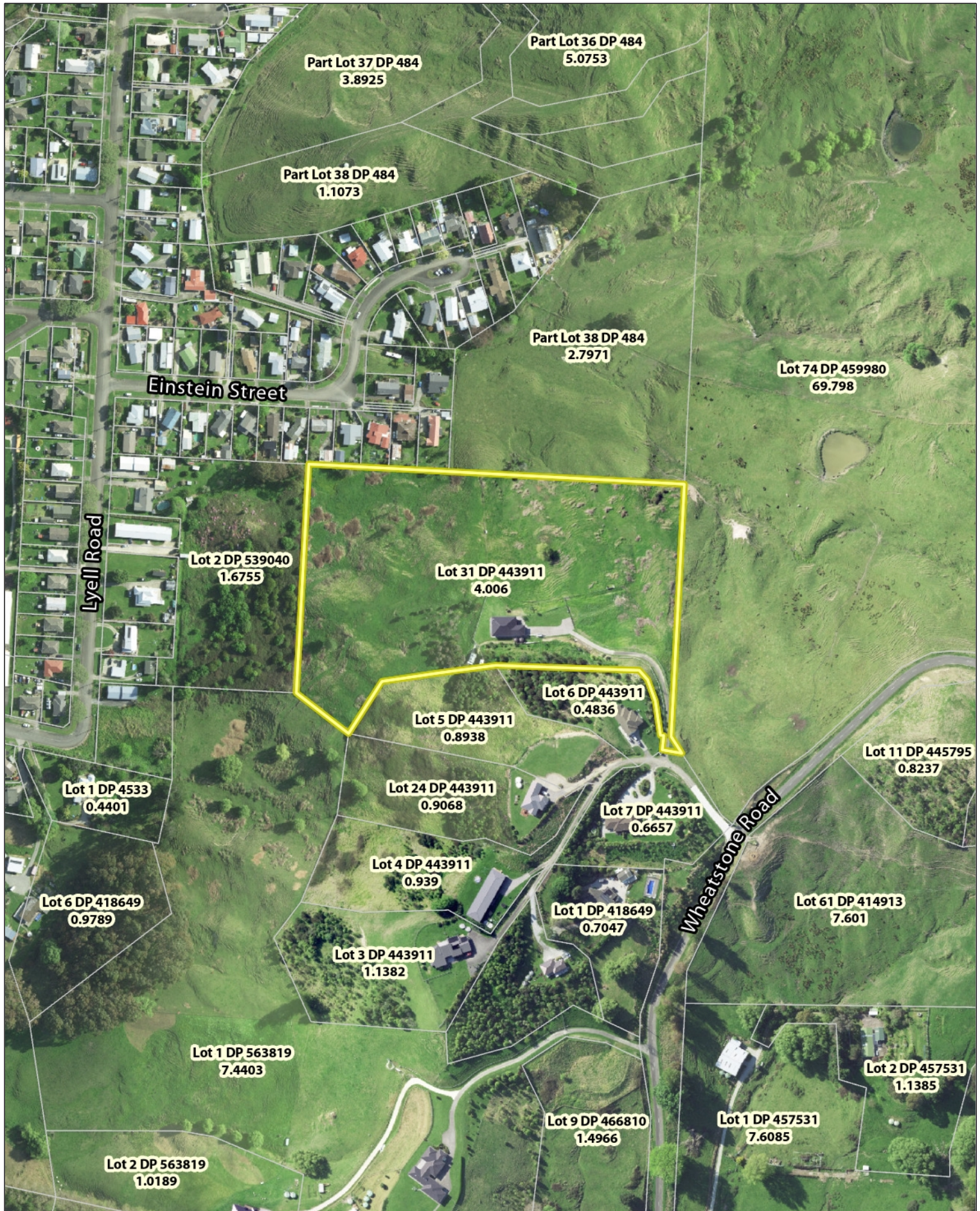


Google  
Google Streetview Image

Information on this plan is indicative only and not mapped to a survey accurate scale. Gisborne District Council accepts no liability for its accuracy and it is your responsibility to ensure that the data contained herein is appropriate and applicable to the end use intended. The information included in this report is indicative only and does not purport to be a complete database of all information in Gisborne District Council's possession or control. Gisborne District Council shall not be liable for any loss, damage, cost or expense (whether direct or indirect) arising from reliance upon or use of any information provided, or Council's failure to provide this report. Copyright under Creative Commons Attribution 4.0 International licence. May contain data sourced from the LINZ Data Service, BOPLASS or Gisborne District Council. For more detailed information relating to this property please request a Land Information Memorandum report from Gisborne District Council - <http://www.gdc.govt.nz/land-information-memorandum-lim/>



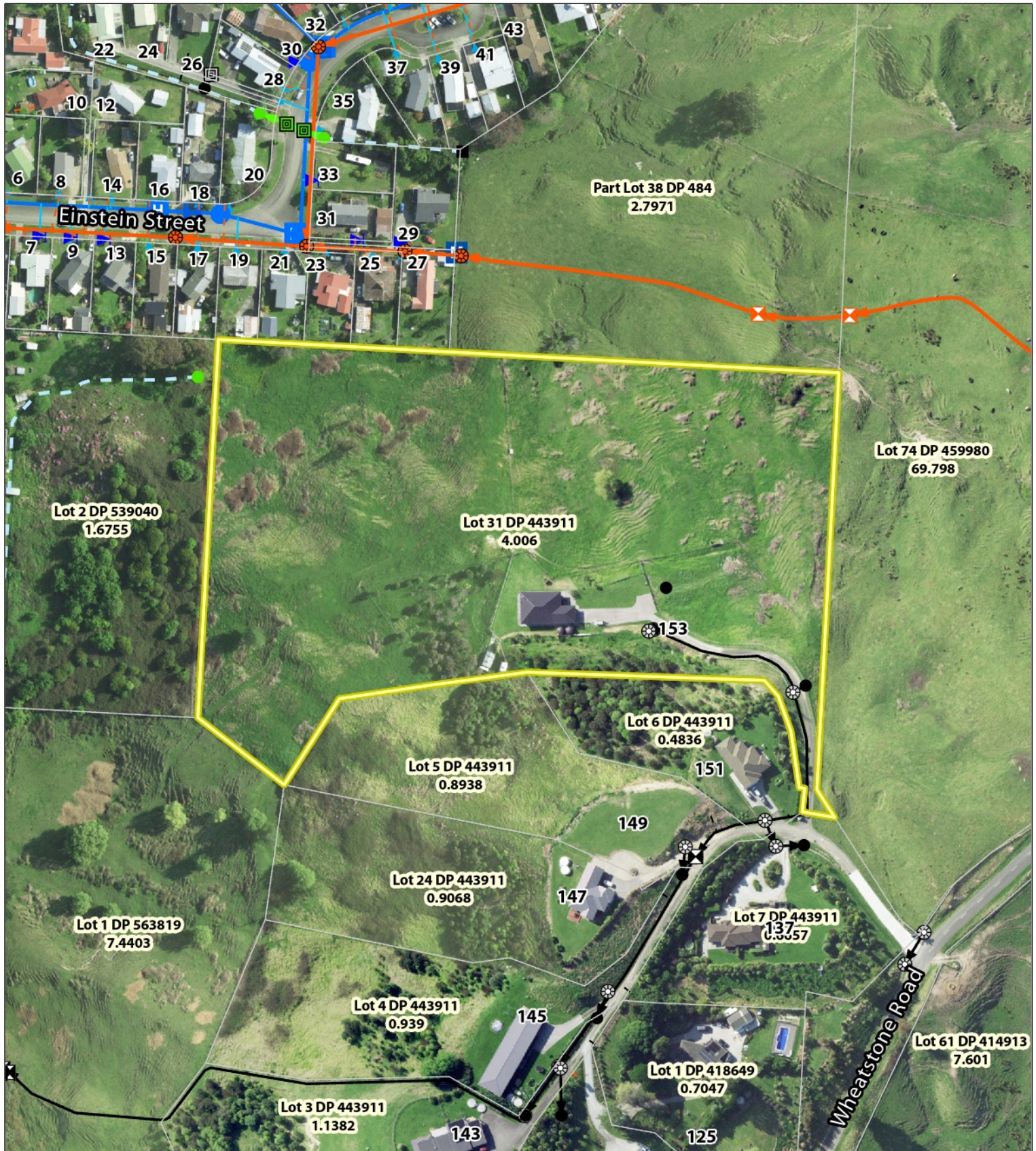
# Locality Map



Information on this plan is indicative only and not mapped to a survey accurate scale. Gisborne District Council accepts no liability for its accuracy and it is your responsibility to ensure that the data contained herein is appropriate and applicable to the end use intended. The information included in this report is indicative only and does not purport to be a complete database of all information in Gisborne District Council's possession or control. Gisborne District Council shall not be liable for any loss, damage, cost or expense (whether direct or indirect) arising from reliance upon or use of any information provided, or Council's failure to provide this report. Copyright under Creative Commons Attribution 4.0 International licence. May contain data sourced from the LINZ Data Service, BOPASS or Gisborne District Council. For more detailed information relating to this property please request a Land Information Memorandum report from Gisborne District Council - <http://www.gdc.govt.nz/land-information-memorandum-lim/>



# Utilities Map



Legend							
Geotech Reports	Drain	GDC Node	Open Channel	Backflow	Water Lateral	Pump Station	Sewer Main
Landfill Areas	Culvert	Pr. Manhole	Pr. Stormwater Pipe	Meter	Water Main	Valve	Private Main
<b>Drains - Rural</b>		Pr. Sump	GDC Pipe	Node	Unknown	Private Manhole	Private Main
<b>Type</b>		Pr. Node	<b>Water Services</b>	Pr. Hydrant	WasteWater Services	Pr. Valve	WasteWater Lateral
River	Manhole	StormWater Drains	Water Toby	Pr. Valve	Sump	Pr. Node	
Stream	StormWater Lateral	StormWater Main	Fire Hydrant	Pr. Node	Node		
	Node		Valve	Sump	Manhole		

Information on this plan is indicative only and not mapped to a survey accurate scale. Gisborne District Council accepts no liability for its accuracy and it is your responsibility to ensure that the data contained herein is appropriate and applicable to the end use intended. The information included in this report is indicative only and does not purport to be a complete database of all information in Gisborne District Council's possession or control. Gisborne District Council shall not be liable for any loss, damage, cost or expense (whether direct or indirect) arising from reliance upon or use of any information provided, or Council's failure to provide this report. Copyright under Creative Commons Attribution 4.0 International licence. May contain data sourced from the LINZ Data Service, BOPLASS or Gisborne District Council. For more detailed information relating to this property please request a Land Information Memorandum report from Gisborne District Council - <http://www.gdc.govt.nz/land-information-memorandum-lim/>